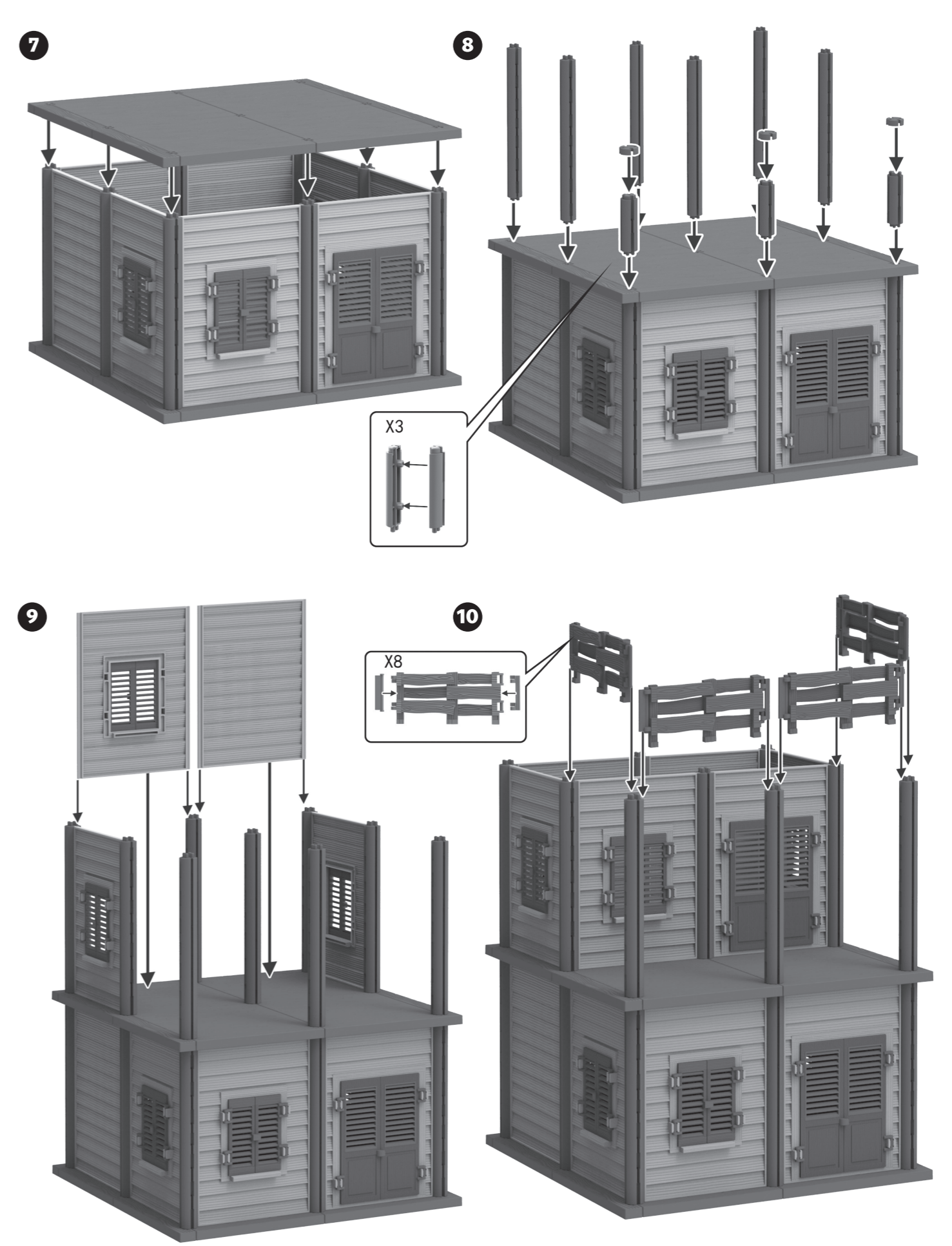
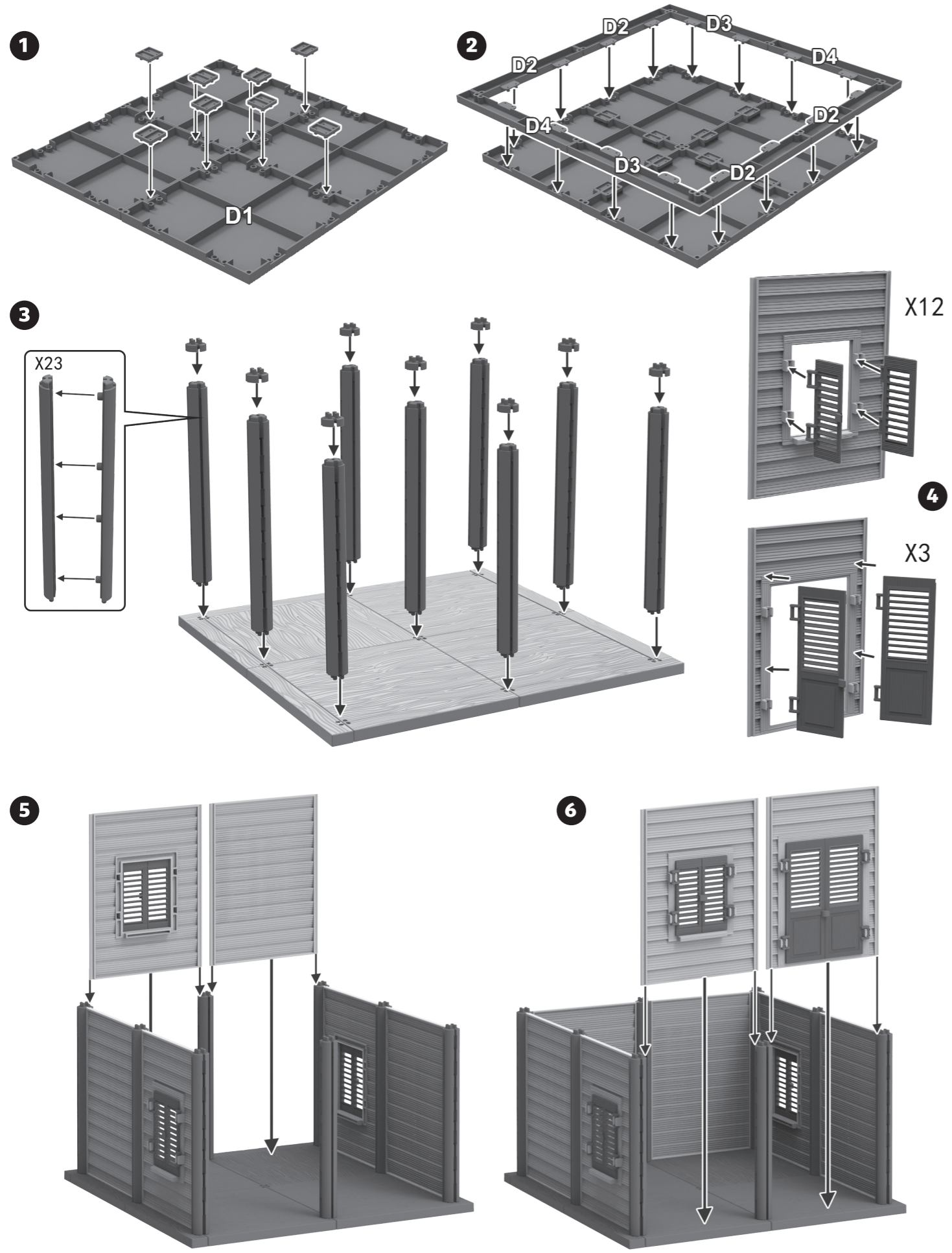
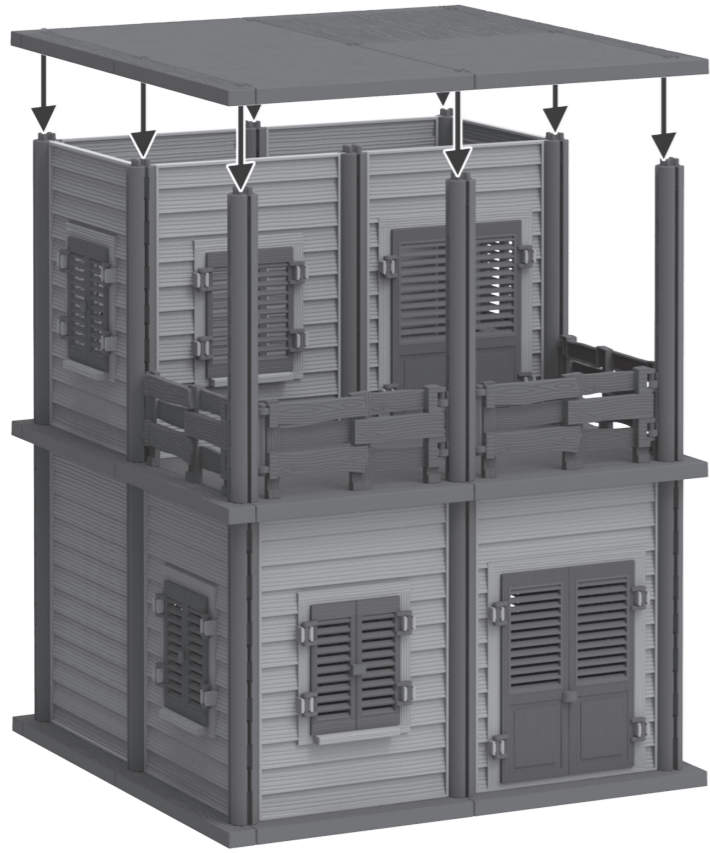


NÁVOD NA SESTAVENÍ / ASSEMBLY INSTRUCTIONS

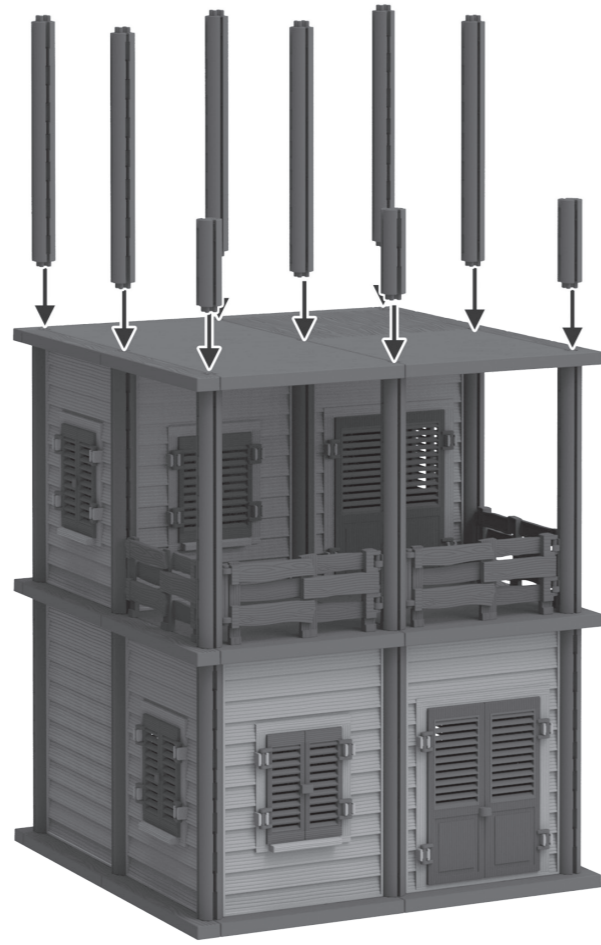
SK - Návod na zostavenie. RO - Instrucțiuni de asamblare. PL - Instrukcja montażu. LV - Montāžas instrukcijas. HU - Összeszerelési útmutató.



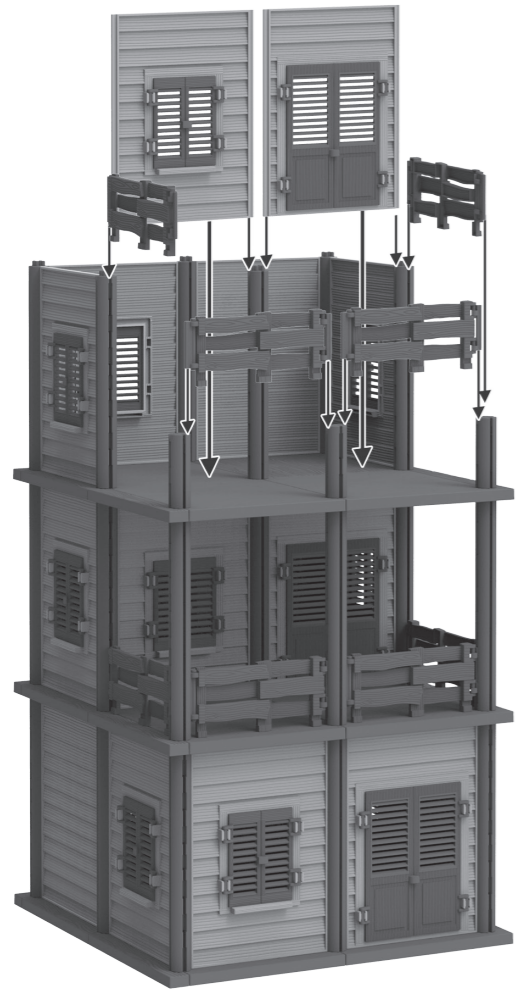
11



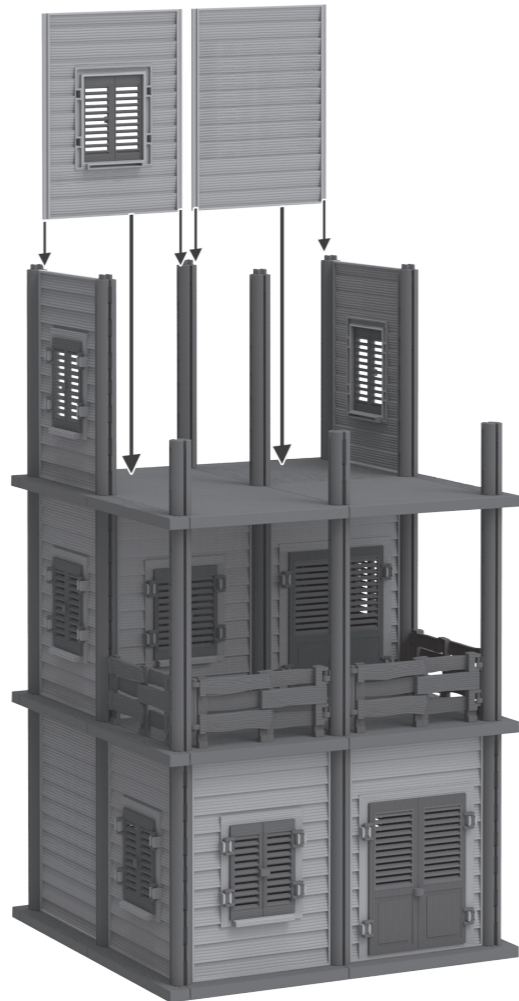
12



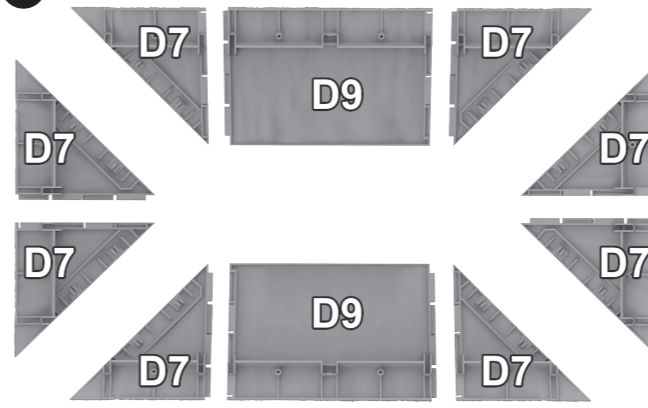
13



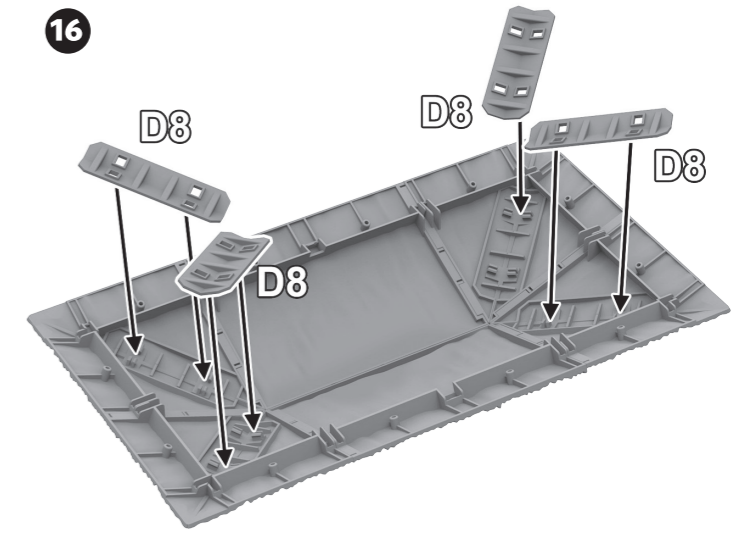
14



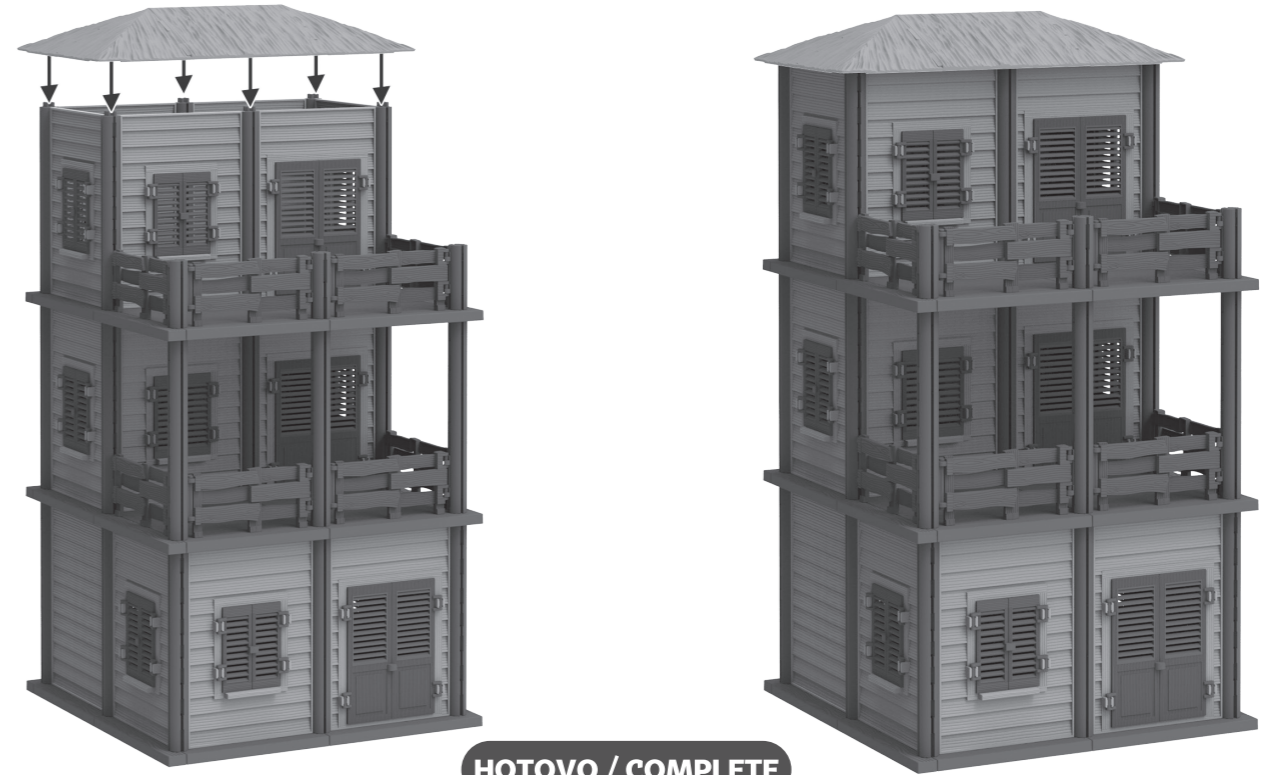
15



16



17



HOTOVO / COMPLETE

